



CHARTER OF THE PARTICIPATORY GARDENS OF ESCH-SUR-ALZETTE

Participatory gardens of Esch are spaces where the land has been made available by the Commune of Esch-sur-Alzette. They are managed by several associations, including **CIGL Esch**, **Transition Minett** and **Gaart Belval a.s.b.l.** and maintained by a group of citizens and/or other educational or charity structures. In each garden, planting, maintenance and harvesting are carried out collectively, according to the procedures defined by the group. Newcomers are welcome, provided they respect this charter and the work of the gardeners. Toute nouvelle personne est bienvenue, sous réserve de respecter cette charte et le travail des jardiniers.



Access and use of the garden:

To take part in our gardening activities or to harvest your own fresh vegetables, please contact us or join one of our public workshops. Detailed information is posted on signs at the entrance of the garden.

To ensure a pleasant experience for all, please note a few important points:

- **Pets:** If you plan to bring your four-legged friends, please keep them on a leash and away from the crops. And of course, don't forget to pick up after them.
- **Ownership:** We invite you to help keep this area clean by leaving it as you found it. Respecting this commitment allows everyone to fully enjoy this green haven.



Values of the participatory gardens of Esch-sur-Alzette

- **Collaborative management and sharing principle:** working together and sharing the fruits (and vegetables) of our efforts.
- **Environment and biodiversity friendly practices:** adopt our sustainable methods to preserve our ecosystem.
- **Natural gardening:** banish the use of pesticides and herbicides for a more nature-friendly approach.
- **Harmony with nature and the seasons:** reconnecting with natural cycles for a better understanding of our environment.
- **Celebrating cultural diversity:** breaking down language barriers to foster a multicultural community.
- **Building intergenerational and inter-community links:** forging strong bonds between different generations and communities.
- **Well-being, relaxation and conviviality:** create a space that favors well-being, relaxation and friendly exchanges.
- **Knowledge transfer, learning and exchange:** to encourage the transfer of knowledge, learning and enriching exchanges.



Activities in the participatory gardens

- **Gardening and plant and fruit production:** growing and harvesting fruits and vegetables.
- **Biodiversity initiatives:** take action to preserve biodiversity and support pollinators.
- **Training, knowledge-sharing, experimentation:** engage in training, exchange knowledge and experiment with new practices.
- **Organizing festivities, events and shared meals:** celebrate together through parties, events and festive meals.
- **Planting flowers:** enhance the beauty of the green spaces by planting flowers.
- **DIY, construction, repair:** take part in DIY, construction and repair activities to improve facilities.



If you would like to join a group, please write to:

Jardin du BREEDEWEE, rue Large:
jardin.esch@transition-minett.lu

Jardin LES 4 COINS DU MONDE, rue Dr Emile Colling:
gemeisguart@ciglesch.lu

Jardin ROSE DES VENTS et **Jardin du CIPA**, op der Leier:
gemeisguart@ciglesch.lu

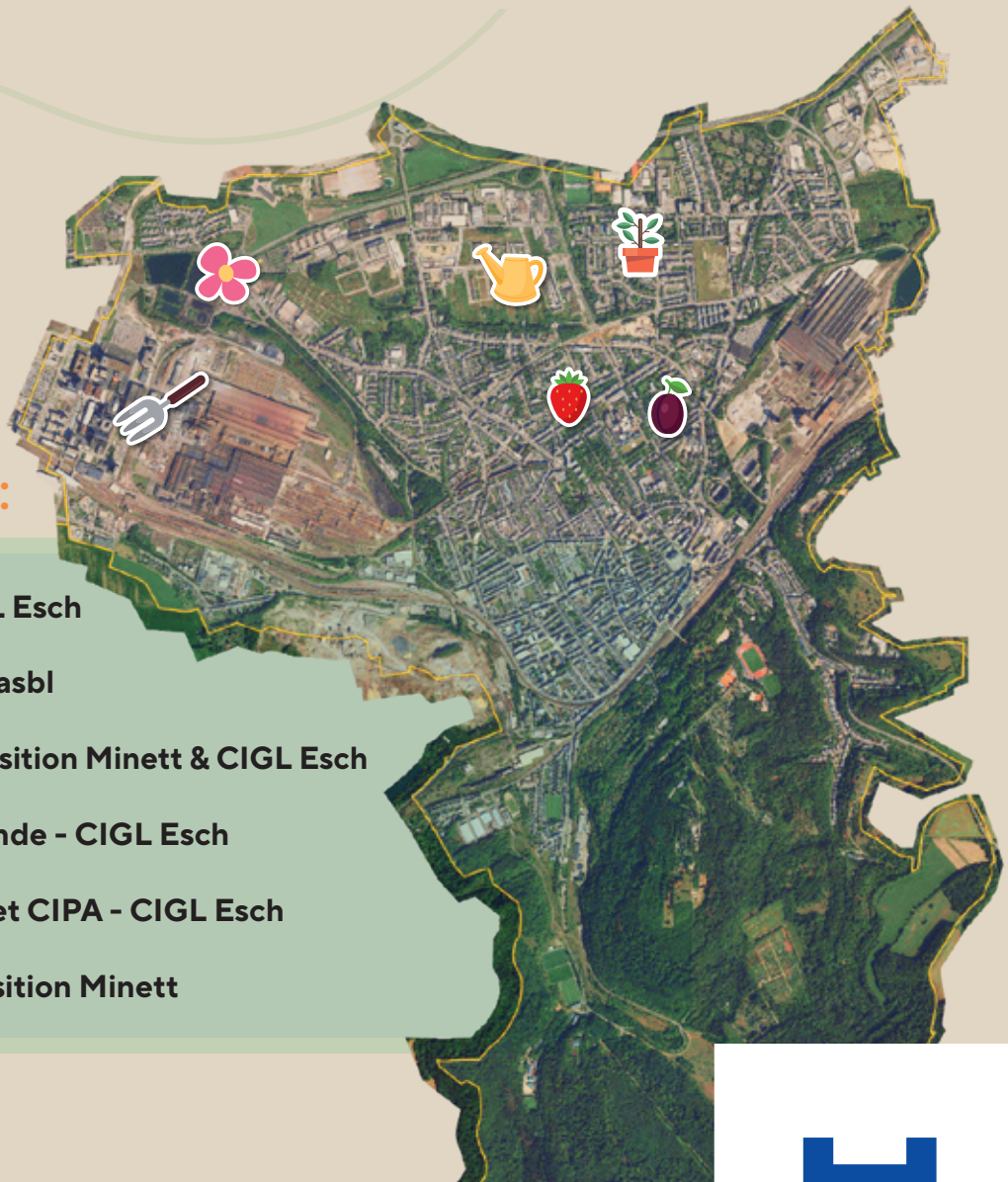
Jardin EIS WISS, rue de Moedling:
gemeisguart@ciglesch.lu

Jardin LES CAPUCINES, rue Louis Braille:
contact@transition-minett.lu and/or gemeisguart@ciglesch.lu

Jardin Gaart Belval, Av. des hauts-Fourneaux:
gaartbelval@gmail.com


This charter was drawn up as part of the Jardins Participatifs Eschois group of the "Collectif Citoyen pour le Climat" (<https://www.transition-minett.lu/climat/>). If you would like to join our inter-garden exchange group, please write to camille@transition-minett.lu.

Map of the Eschois Participative Gardens:



 **Le jardin « Eis Wiss » - CIGL Esch**

 **Gaart Belval - Gaart Belval asbl**

 **Le jardin Nonnewisen - Transition Minett & CIGL Esch**

 **Le jardin des 4 coins du monde - CIGL Esch**

 **Les jardins Rose des Vents et CIPA - CIGL Esch**

Le jardin Breedewee - Transition Minett